

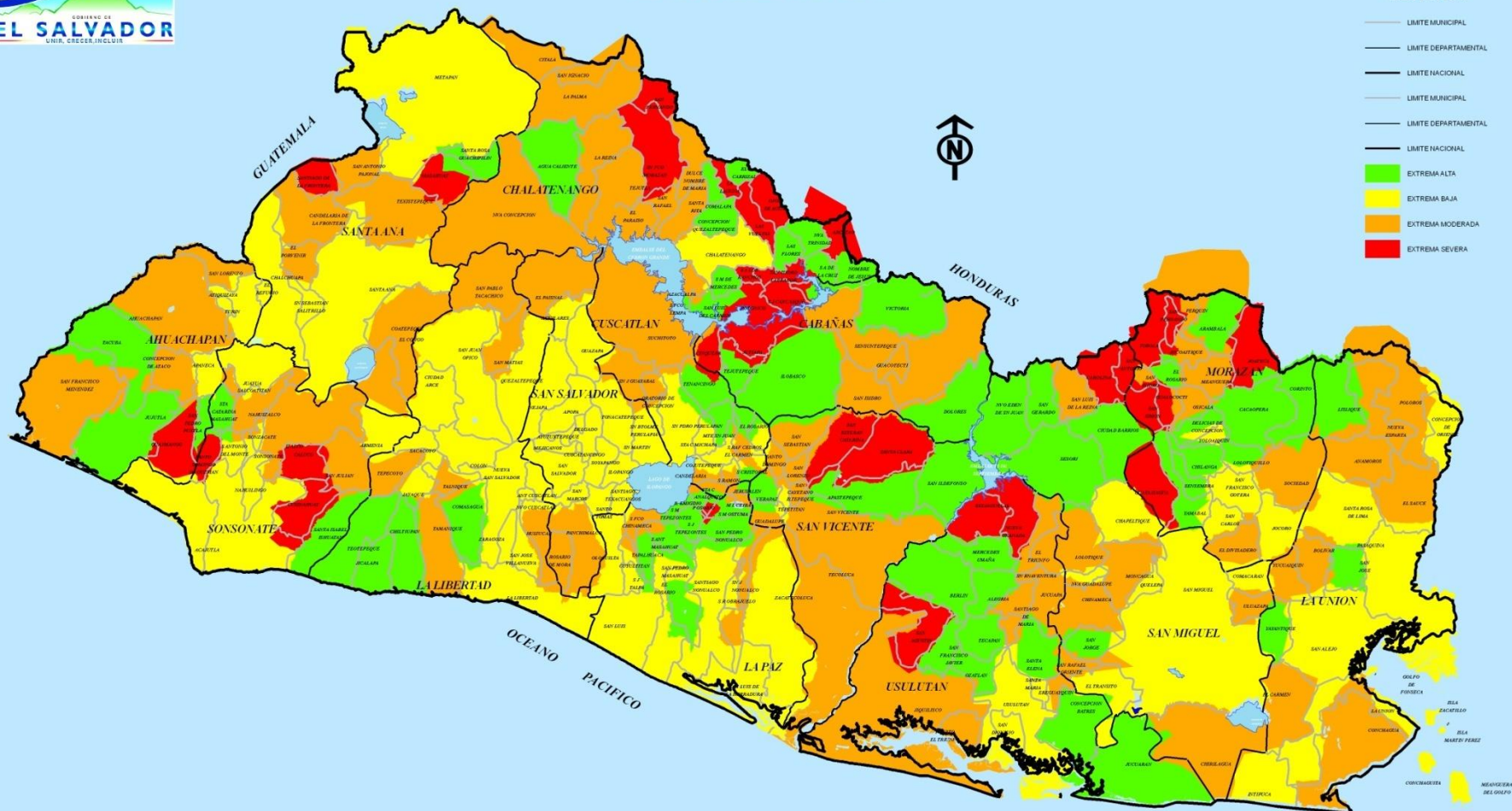
A conceptual illustration featuring a blue, cracked bomb with a chain attached to its top, positioned on the left. To its right is a large, golden dollar sign. The background is a gradient of brown and red. The word "ECONOMICOS" is written across the center in a bold, green, sans-serif font with a white outline.

ECONOMICOS

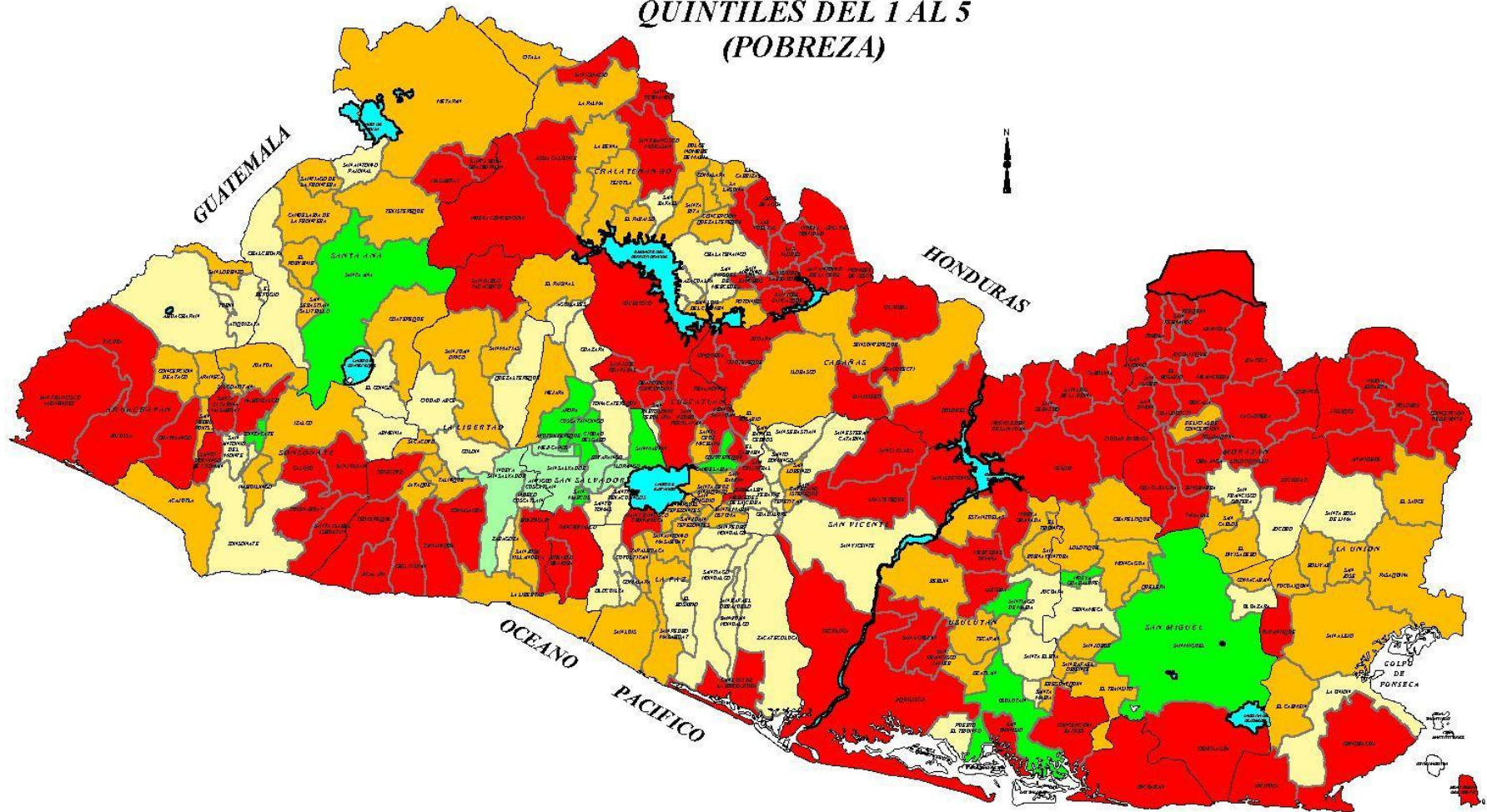
MAPA DE EXTREMA POBREZA EL SALVADOR, 2007

LEYENDA

- LIMITE MUNICIPAL
- LIMITE DEPARTAMENTAL
- LIMITE NACIONAL
- LIMITE MUNICIPAL
- LIMITE DEPARTAMENTAL
- LIMITE NACIONAL
- EXTREMA ALTA
- EXTREMA BAJA
- EXTREMA MODERADA
- EXTREMA SEVERA



PRIORIZACION DE MUNICIPIOS SEGUN F.I.S. QUINTILES DEL 1 AL 5 (POBREZA)



LEYENDA

- QUINTIL 1
- QUINTIL 2
- QUINTIL 3
- QUINTIL 4
- QUINTIL 5

ESCALA 1:1,000,000
10 0 10 20 30 40 Kilometers

DIRECCION GENERAL DE ECONOMIA AGROPECUARIA
UNIDAD DE INFORMACION GEOGRAFICA
MAYO 2000

FUENTE: MINISTERIO DE
ECONOMIA-DIGESTYC-DIVISION
DE INFORMACION SOCIAL (1999)

MAPA CAÑA DE AZUCAR Y POBREZA

